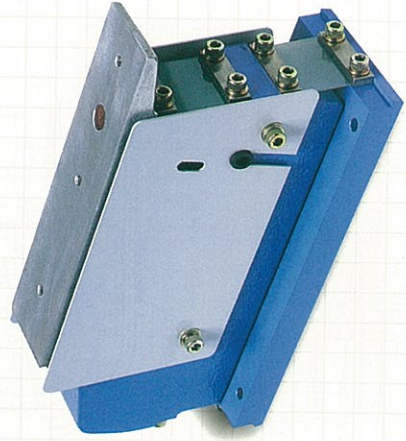


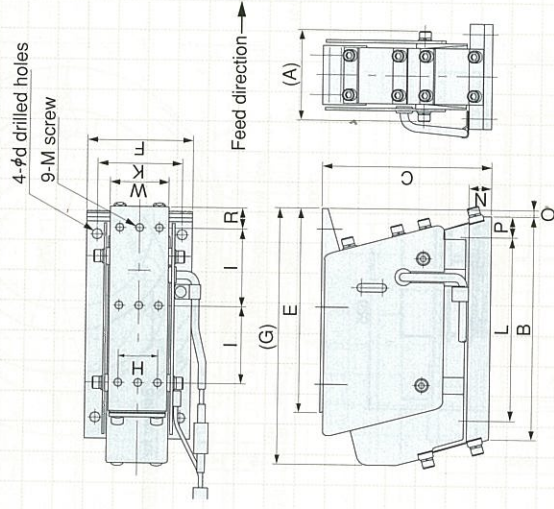
LFB series—Leaf-spring_vibro-isolating type

Uniform vibration with no need for adjustment

Use of a variable frequency controller eliminates the need for leaf-spring and core-gap adjustments. Provides uniform vibration with no adjustments necessary, and is easily installed to link up with other equipment, greatly improving ease of use. Can accommodate heavier chute weights and longer overhangs, to widen scope for applications. The drive unit is slim, and with virtually no vibration interference it can easily be combined with parts feeders, to suit wide-ranging combinations. The three models in this series can be used selectively to handle all sizes and shapes of workpiece.



LFB-300/400/550 Dimensions



Features

- Simple, uniform vibration

Use with heavier chutes and longer overhangs opens a wider range of applications. Consistent, uniform vibration is supplied without the need for adjustment.

- Energy saving type

Energy consumption cut by half, compared with our earlier models.

Specifications

Model	LFB-300	LFB-400	LFB-550
Rated voltage	V	200	
Rated current	A	0.04	0.08
Vibration frequency	Hz	90~120	80~110
Drive unit weight	kg	3.0	5.0
Leaf-spring angle	degree	15	
Max. amplitude	mm	0.6	0.65
Compatible controller	Single	C10-1VF	
	Twin	C9-3VFT-2	
Compatible controller	Single	C10-1VF+C10-TR	
	Twin	C9-3VFT-1	

Dimensions Chart

Model	A	B	C	E	F	G	H	I	K	L	M	N	O	P	R	W	d
LFB-300	57	135	97	124	65	150	24	45	55	110	5	16	3	10	15	38	6
LFB-400	65	160	120	145	75	180	28	55	60	130	6	16	5	15	15	42	7
LFB-550	79	230	143	200	90	255	38	75	75	190	6	19	5	20	20	52	9

Chute Specifications, including Overhang

Model	Max. length	Max. width	Min. thickness	Weight range (kg)	Basic position (at max. chute length)				
					L1	L2	L3	L4	L5
LFB-300	300	50	6	0.4~1.0	66	110	40	124	3
LFB-400	400	50	10	0.8~2.0	105	150	70	145	5
LFB-550	550	65	14	1.4~3.5	140	210	85	200	5

LFB Series

